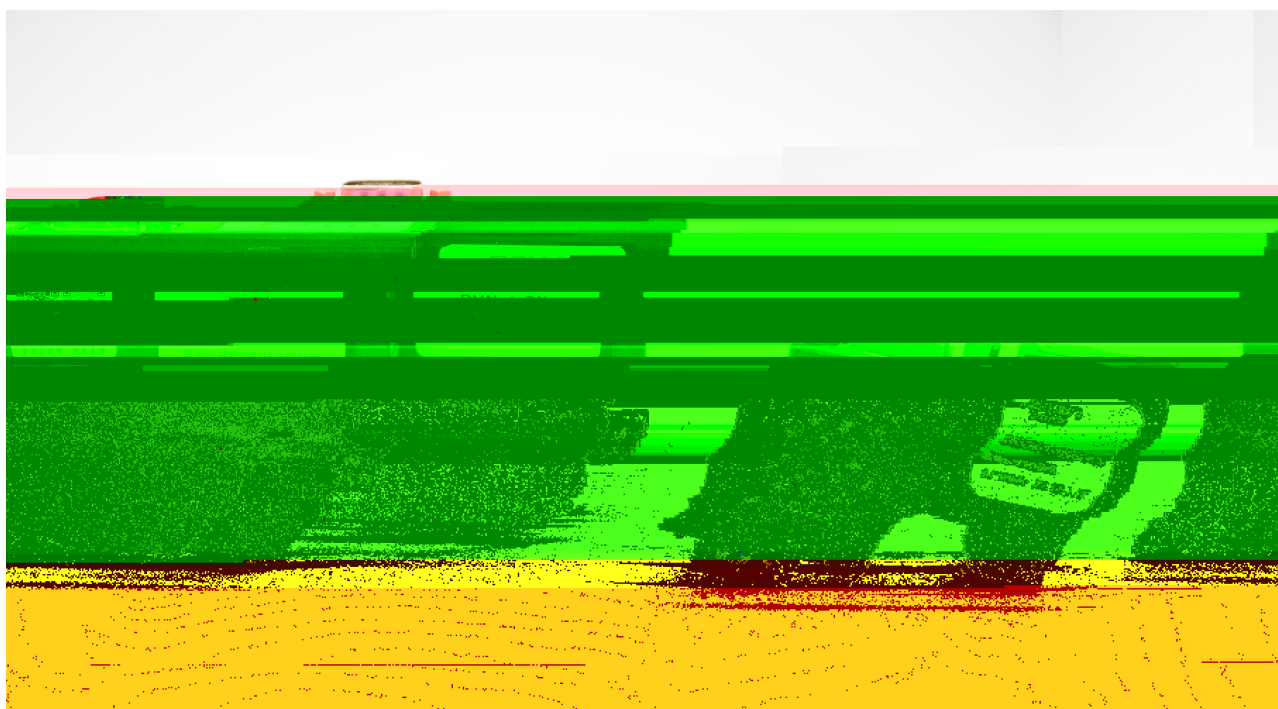




RVNet-CX

PLC



1.RVNet-CX

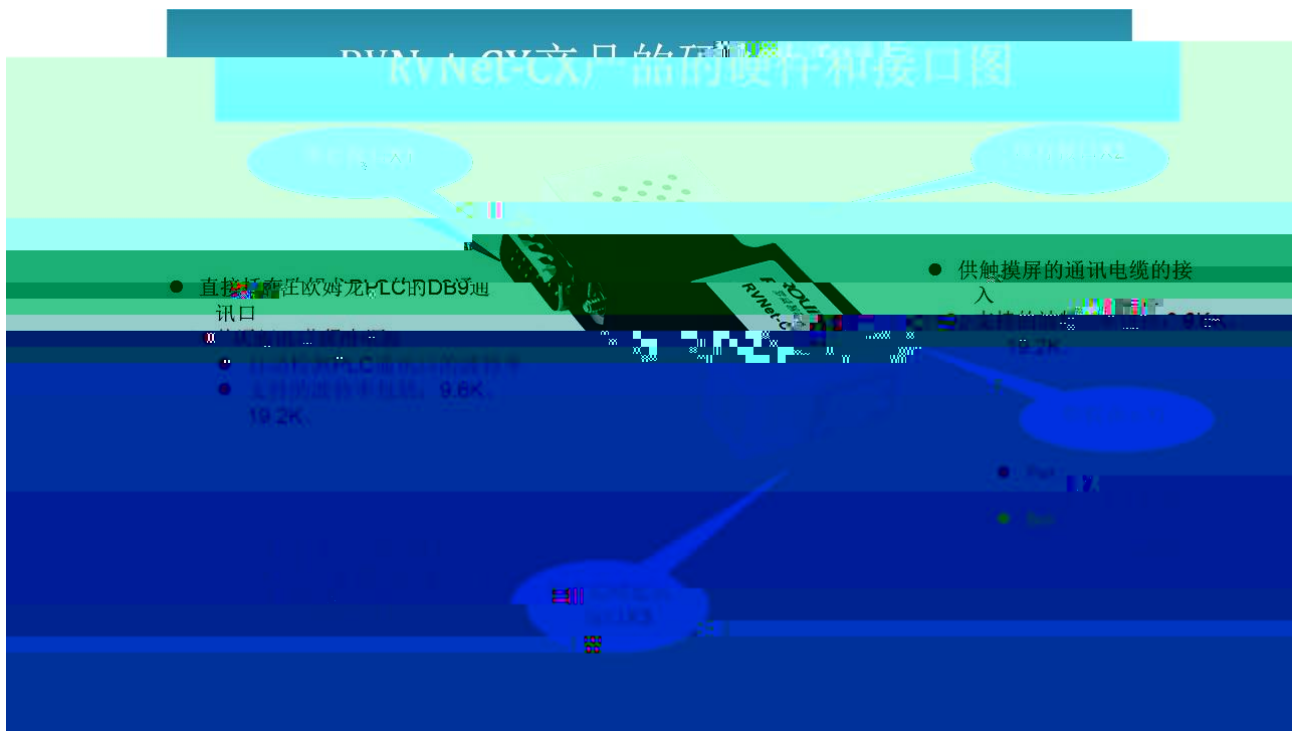
RVNet - CX

CPM CQM C200 C1000 C2000

PLC

RVNet - CX

2



LEBOCS

RJ45

2

TX+

3

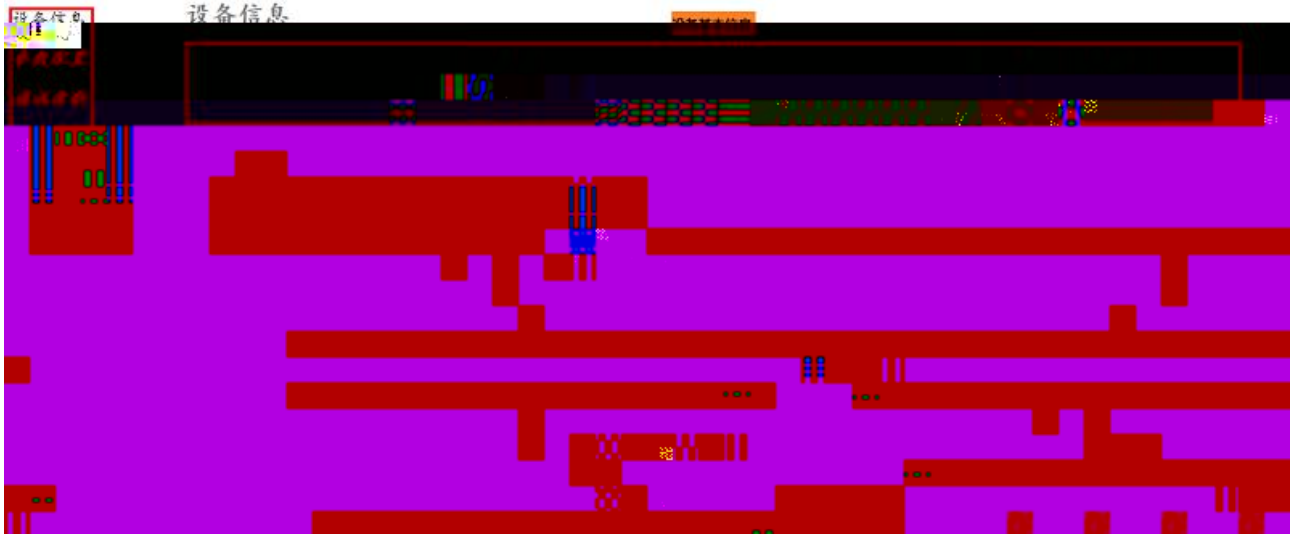
TX-

RX+

6

RX-

Link	RVNet-CX	RVNet-CX	RJ45	RVNet-CX	Link
IP	192.168.1.100				



PLC Host Link



COM1— PLC

PLC
PLC

COM2—

TCP/IP—

TCP TCP
RVNet-CJ-NT

设备信息

参数配置

通讯诊断

修改密码

功能说明

修改密码

修改密码后，点击[确认]按钮。

原密码:

新密码:

确认

4. SCADA

TXP_{gv}/EZ OqfdwuVER OqfdwuVER OqfdwuVER

 QRE RNE OqfdwuVER

 CPM CQM C200 C1000 C2000 RNE Oqfdwu TXP_{gv}

 RNE HE3 HE5 HE7 HE8 HE37 HE38

OqfdwuVER

2z2	2z2	2z2	2z2	2z2							

1

Oqfdwu	ERIEL	RNE			
222223 22:542	KT	KT202 KT73;037		KT o/p ? 222223- o ,38-p	
22:223 232822	JT	JT202 JT ; ;037		JT o/p ? 22;223- o ,38-p	HE3* + HE3<4222
233223 2336:2	CT	CT202 CT4;037		CT o/p ? 233223- o ,38-p	HE7* + HE7<3
234223 235342	NT	NT202 NT8;037		NT o/p? 234223- o ,38-p	HE37* + HE37<3;8:
242223 242742	VE	VE2 VE73;		VE o ? 242223- o	
622223 622742	KT	KT2 KT73;		KT o ? 622223- o	
622823 622922	JT	JT2 JT ; ;		JT o ? 622823- o	HE5* + HE5<347
632223 632252	CT	CT2 CT4;		CT o ? 632223- o	HE8* + HE38<345
622:23 622:92	NT	NT2 NT8;		NT o ? 622:23- o	HE38* + HE8<3
623223 629882	FO	FO2 FO887;		FO o ? 623223- o	
242223 242742	VK0IEPV	VE2 VE73;		VE o ? 642223- o	

①

IR12 6 m=12 n=6

000001+12*16+6=000199 Modbus

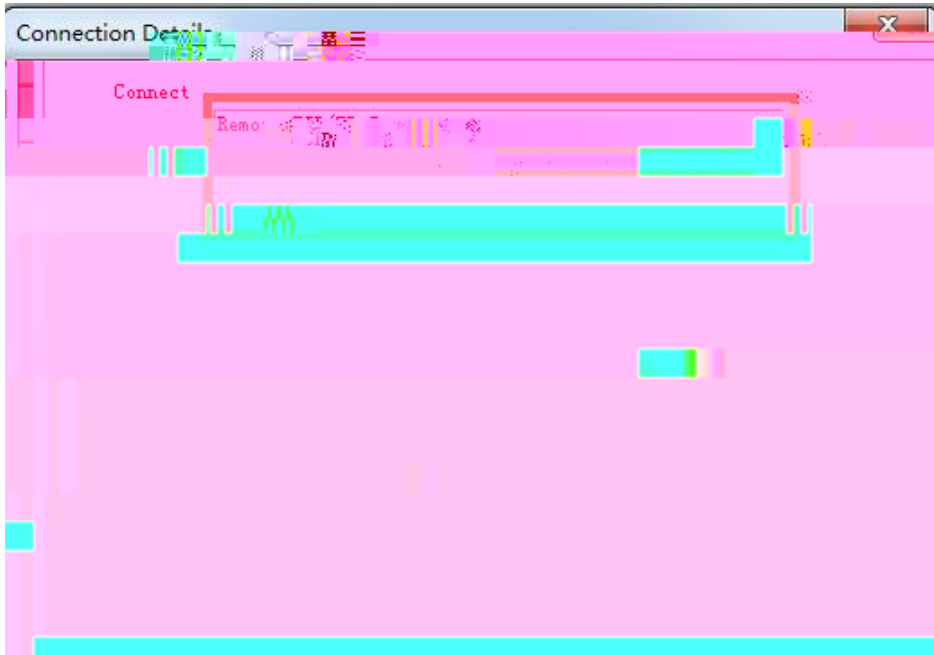
0 00199

2 ModScan32

o q f u e c p 4 a e t t c t

30 O q f U e c p 5 4

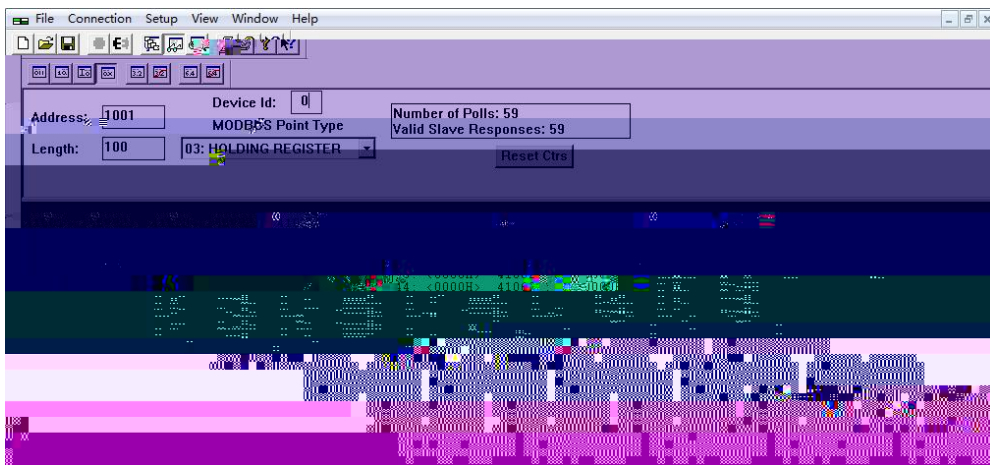
40 E q p p g e v k p l E q p p g e v T g o q v g V E R I K R U g t x g t T X P g v / E Z K R U g t x k e g
724 J Q M _ 3



3

50 " O q f U e c 3 " F g x k e g K F R N E 3 2 5 < J Q N F K P I T G I K U V G T
C f f t g u u ? 3 2 2 3 N g p i v j ? 3 2 2

60 6 2 3 2 2 3 6 2 3 3 2 2 3 8 E R O R N E F O 2
F O ; ; 4



4

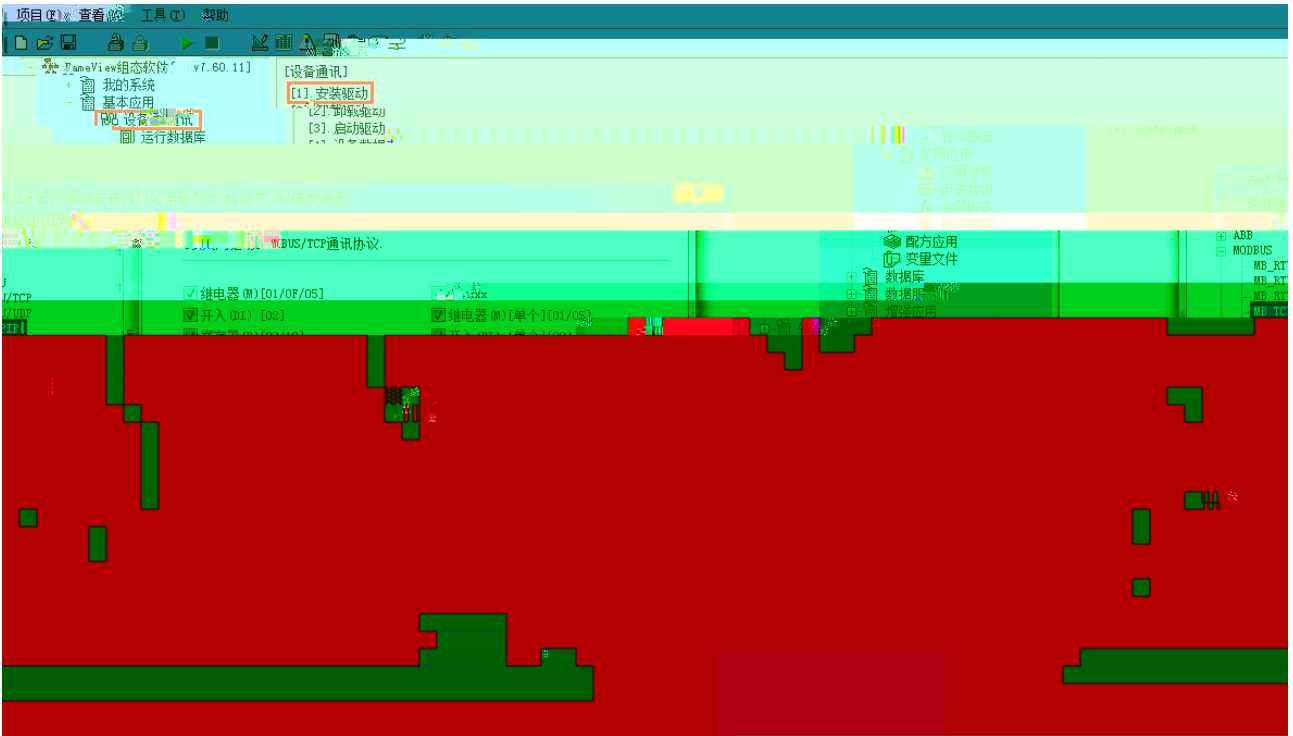
70



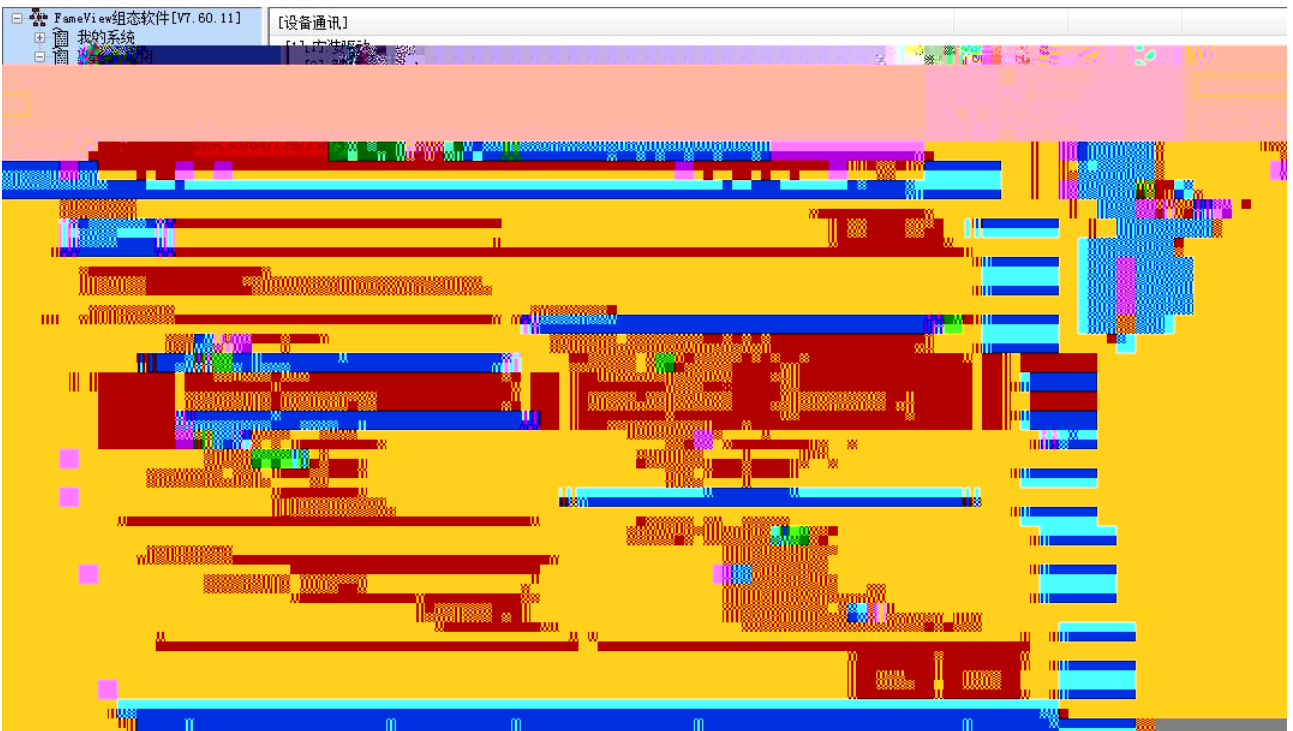
4.



1. " " " " " MB_TCPI P " "



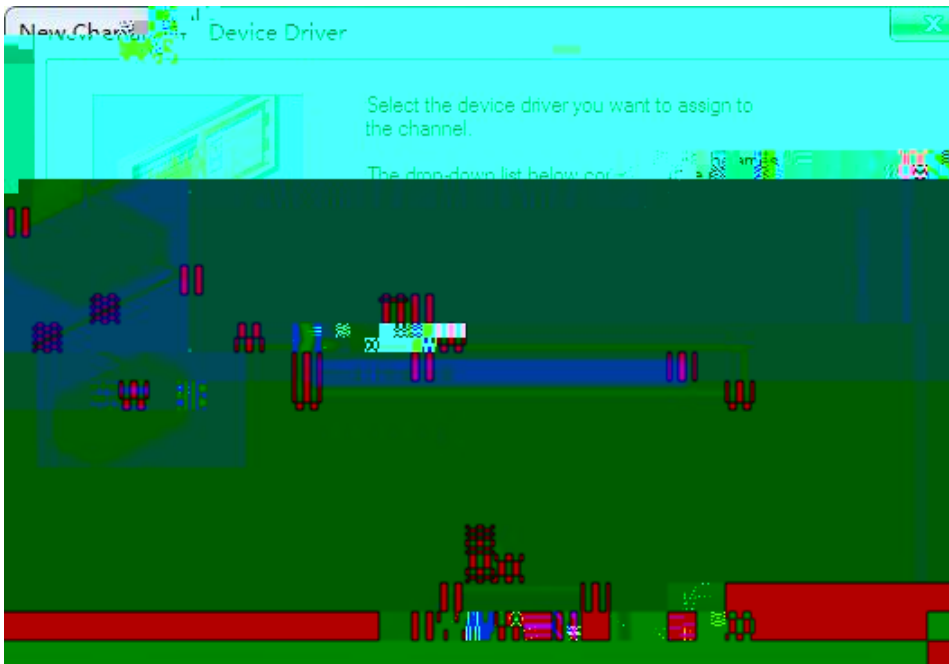
2. " " " " RVNET " " 502 "
 IP " RVNet-CX IP 192.168.1.178 " "



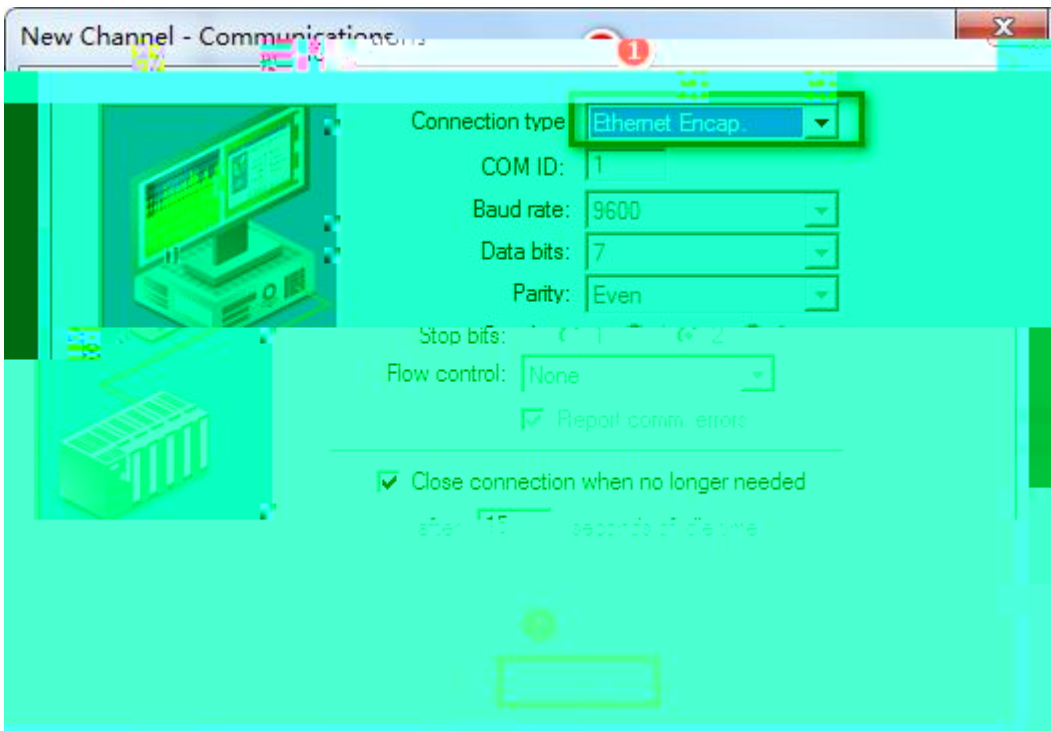
1 Kepware OPC Configuration



2 Device driver " Omron Host Link"



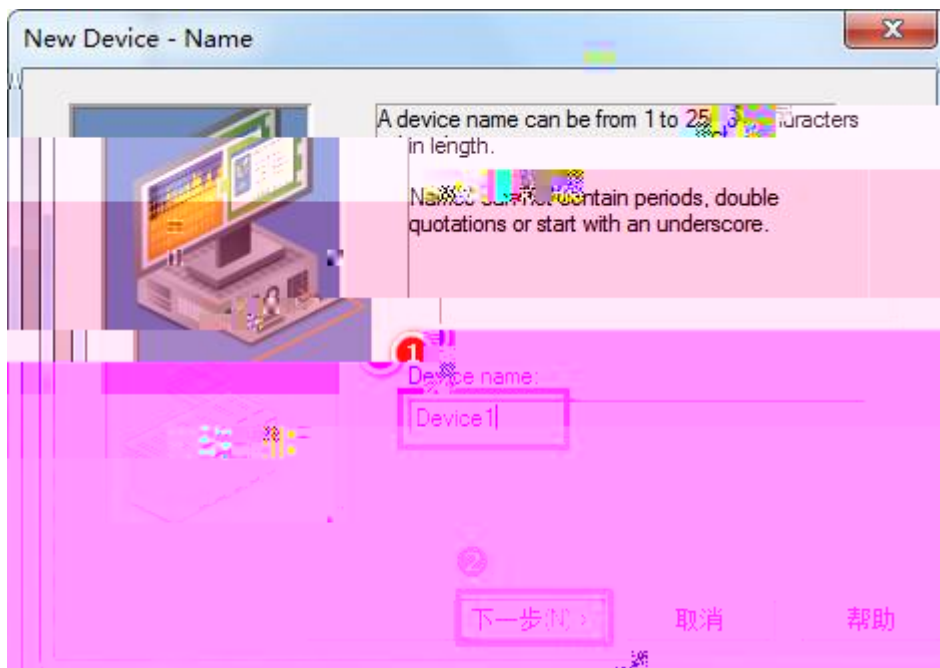
3 Connection type " Ethernet Encap"



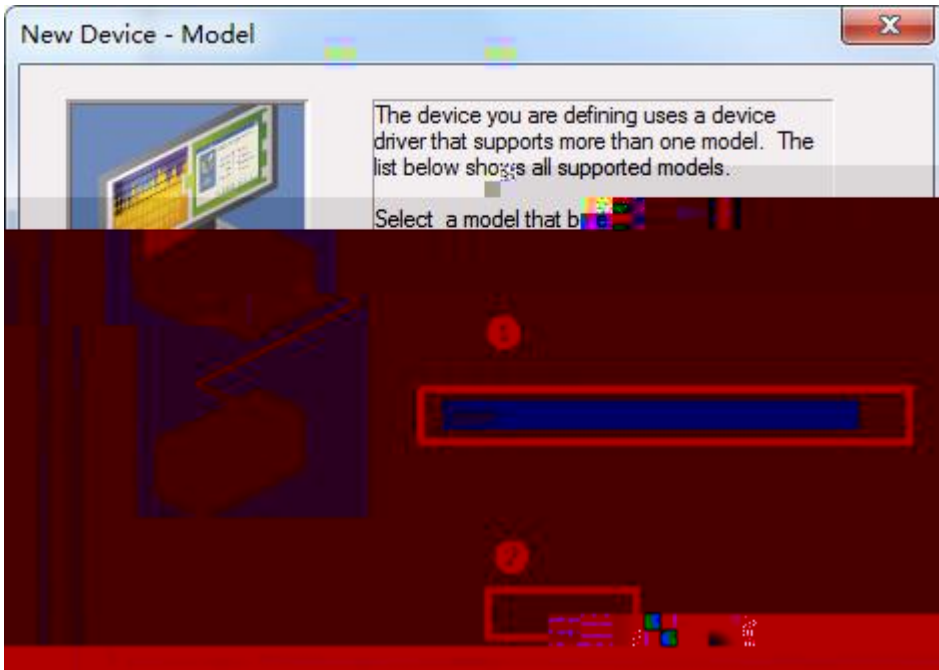
4



5 " Click to add a device"



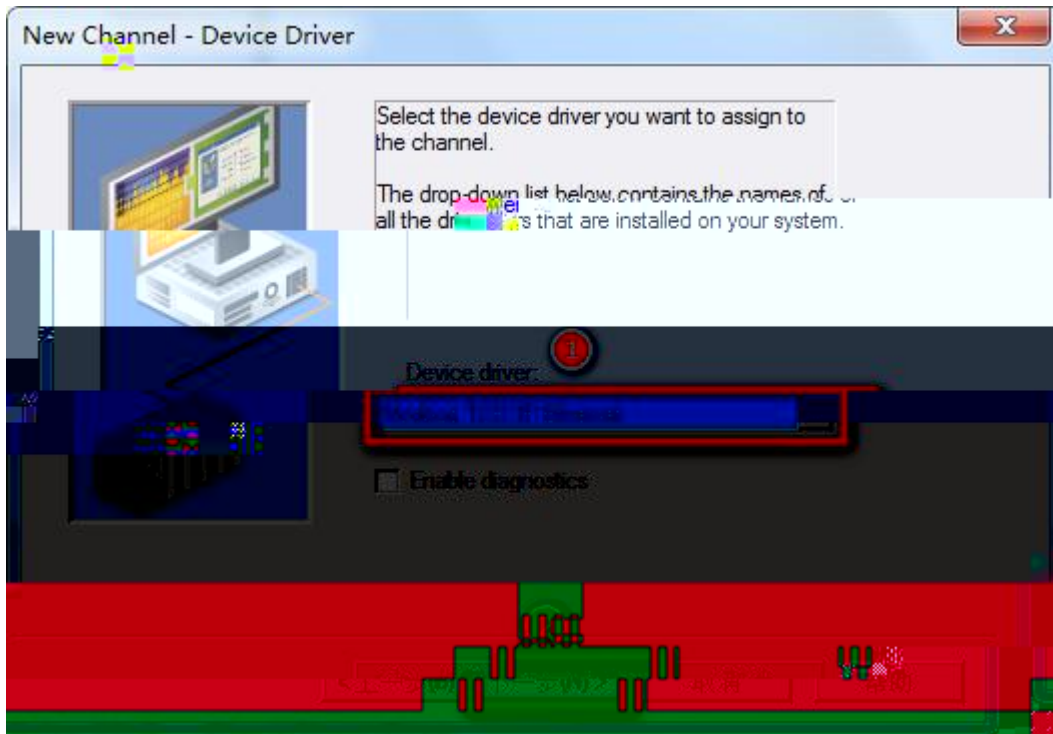
6 Device model " Open"



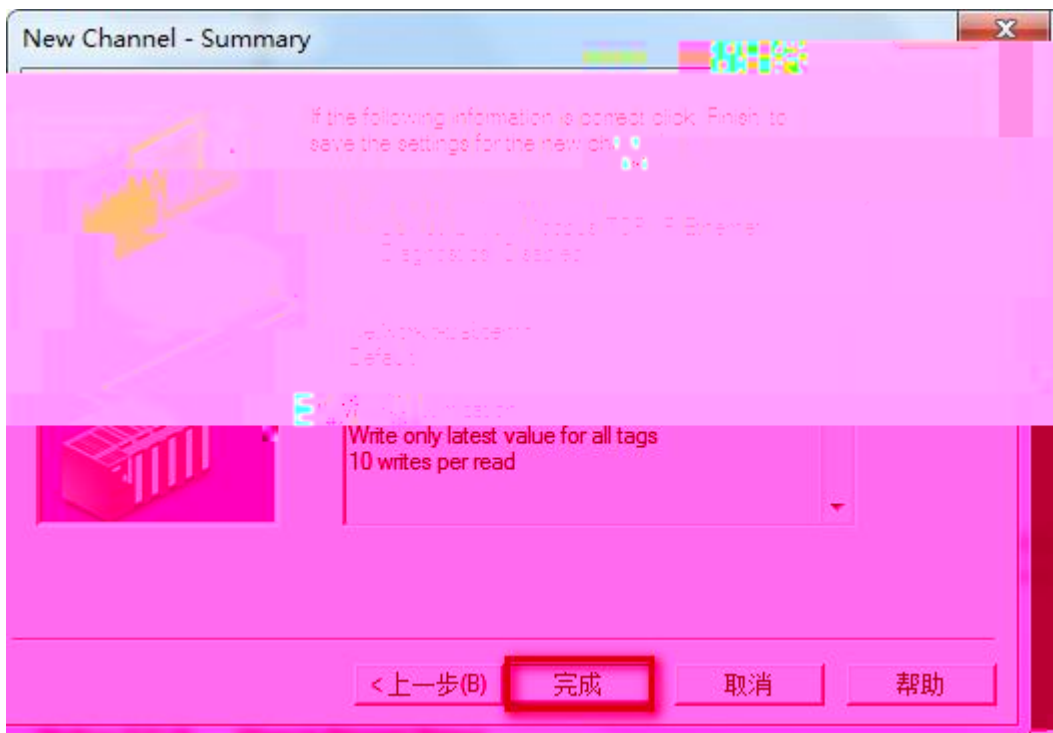
7 PLC IP 192.168.1.178 5000



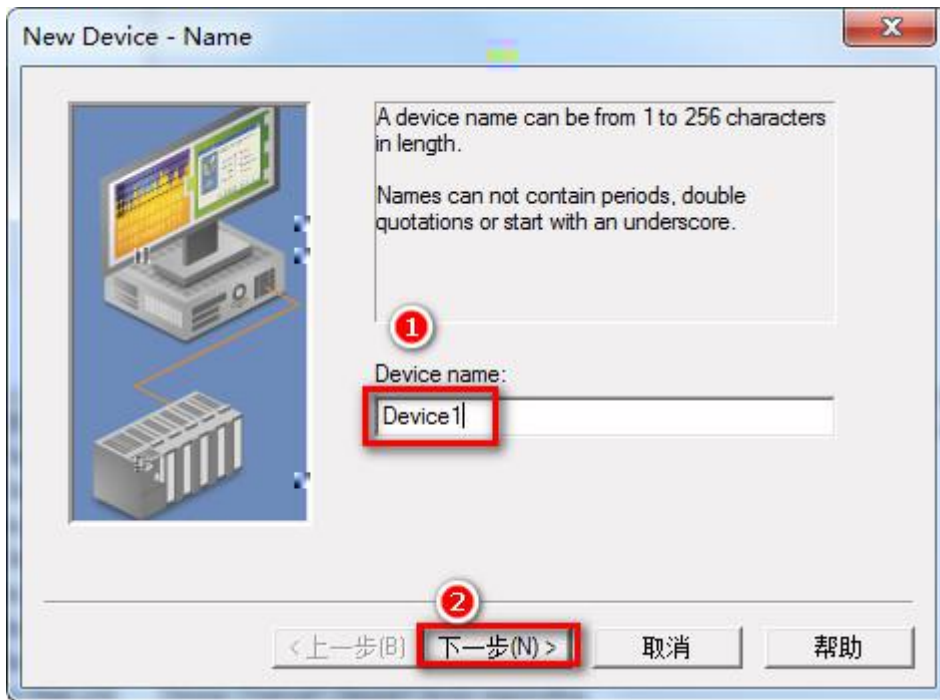
8



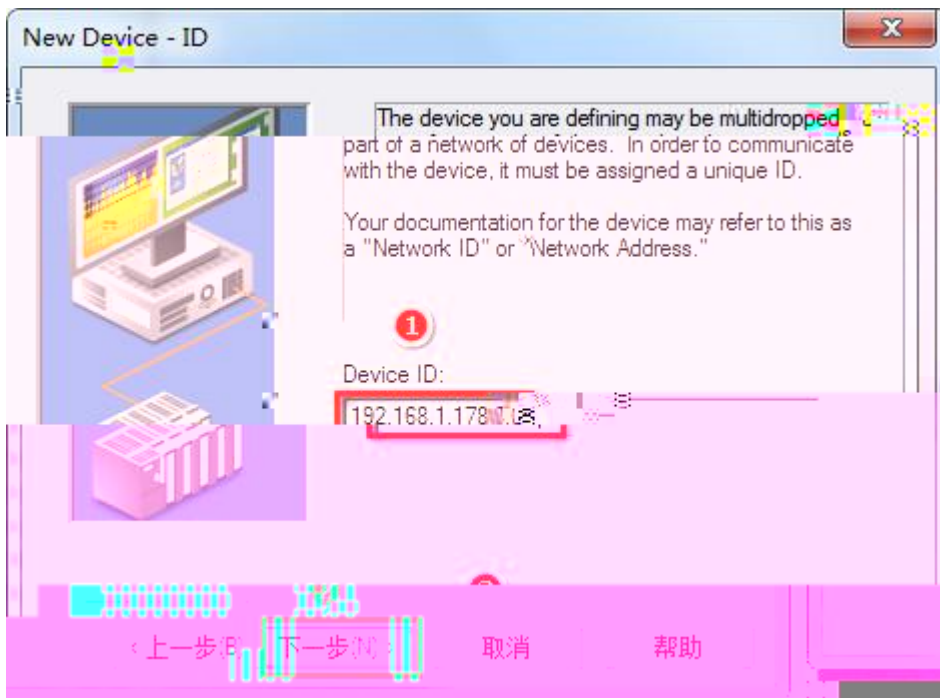
3



4 " Click to add a device"

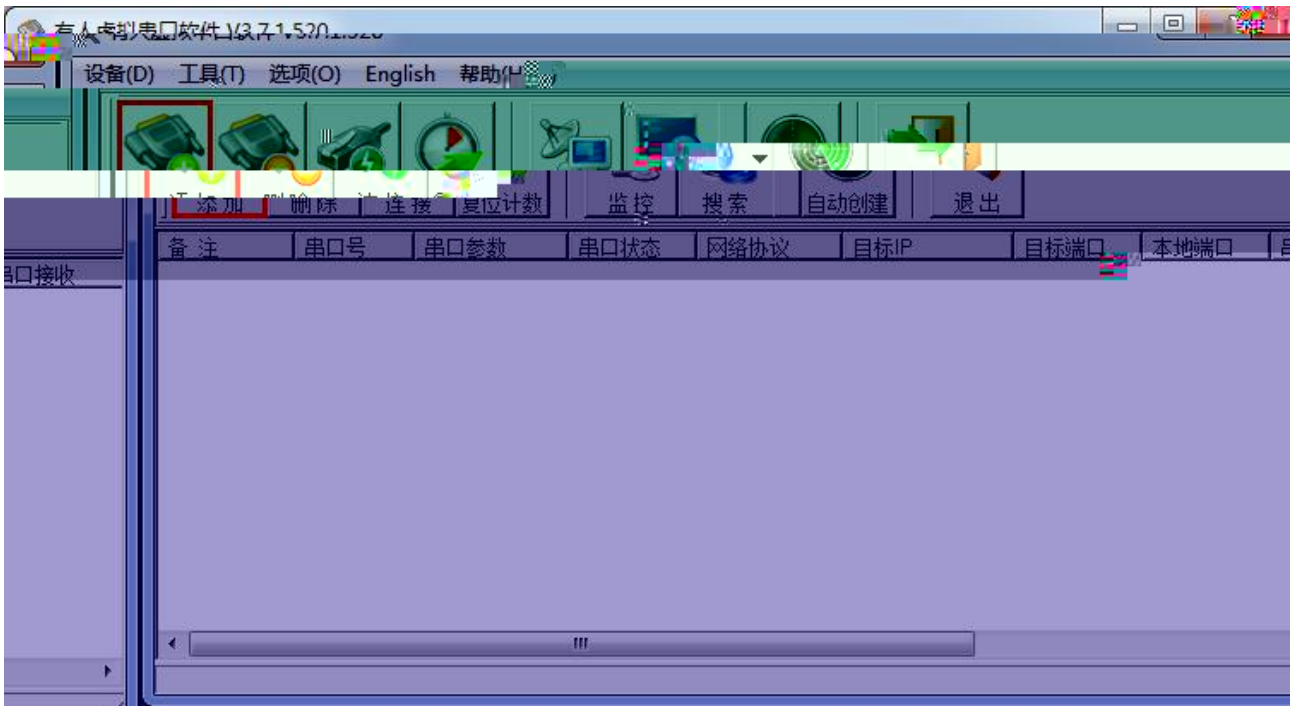


5 Device ID PLC IP 192.168.1.178.0



6

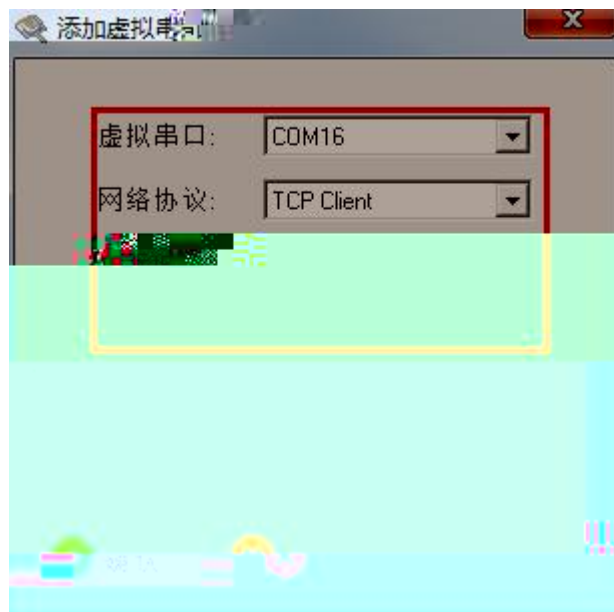
1

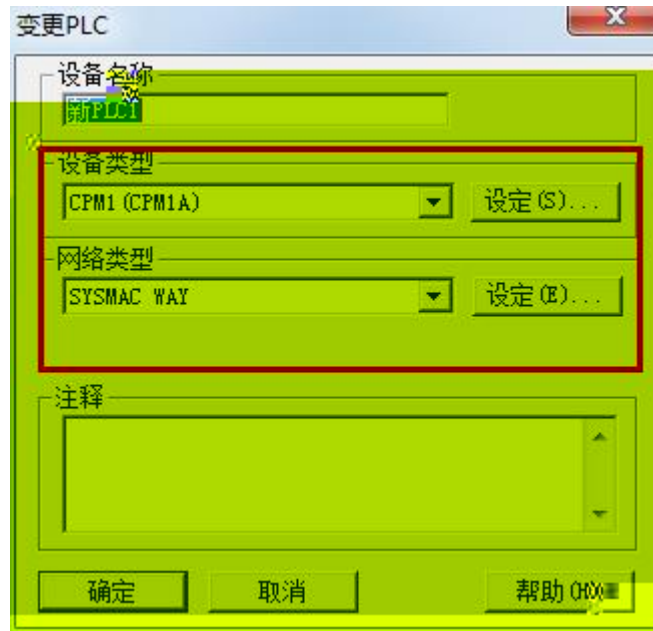


2

TCP Client
IP/ IP

COM16

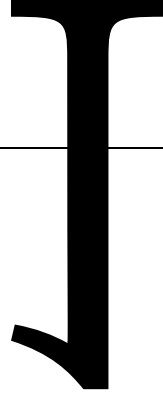
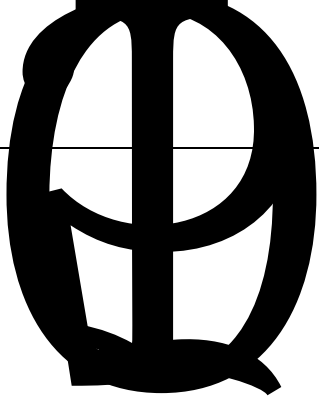




5.

		RNE
		Ryt Dwu
VER		KGGG : 2405 NkpmI Cevkxg Cwvq/ OFKZ TL67 321322Odru OqfdwuVER 8
Z3	RNE	TU454 FD; ;08M 3;04M 5:06M 33704M Jquvknpm E/Oqfg PV Nkpm
Z4	JOK	TU454 FD; ;08M 3;04M 5:06M 33704M Jquvknpm E/Oqfg PV Nkpm
		KG 3;4038:03039:
		46XFE
		46XFE1322oC
		2ø82
		;2'
		57o o
		42361521GW
TqUJ		
		607o o152J 132Okp
GUF		8MX
		82 38: 72222
		52 RNE 3 5 2
		EG
N, Y, J		;2,46,87o o
		322i

6.



100

2755

250101

0531 1 5

5 191 5 1