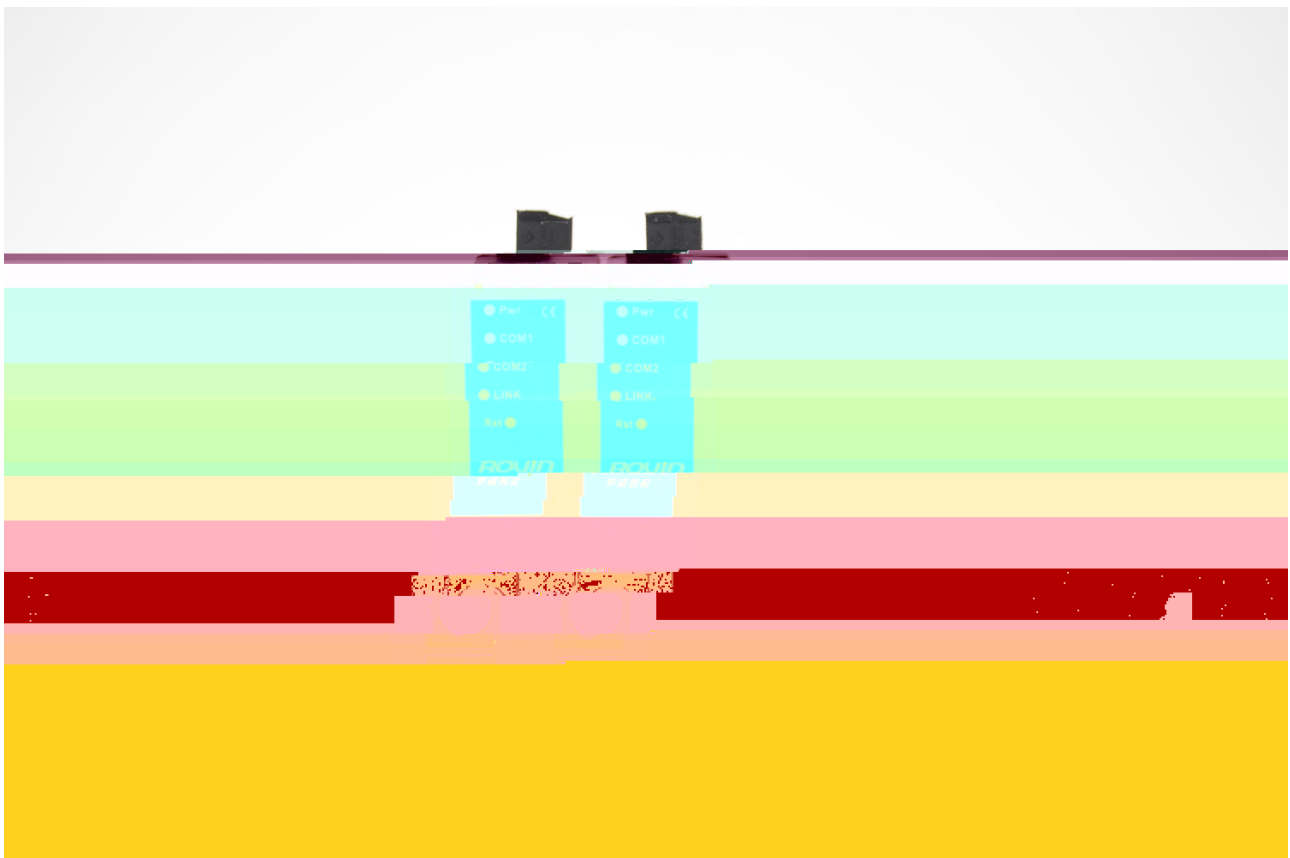




PLC



## 1.1

RVNet-XJ

XC XD

PLC

RVNet-XJ

PLC  
X2 ØLC

/

PLC

## 1.2

1	35mm	COM	XJ	MD8		COM2
2	RVNet-XJ	PLC			24VDC	
2	LC <del>DEB</del>				#	

---

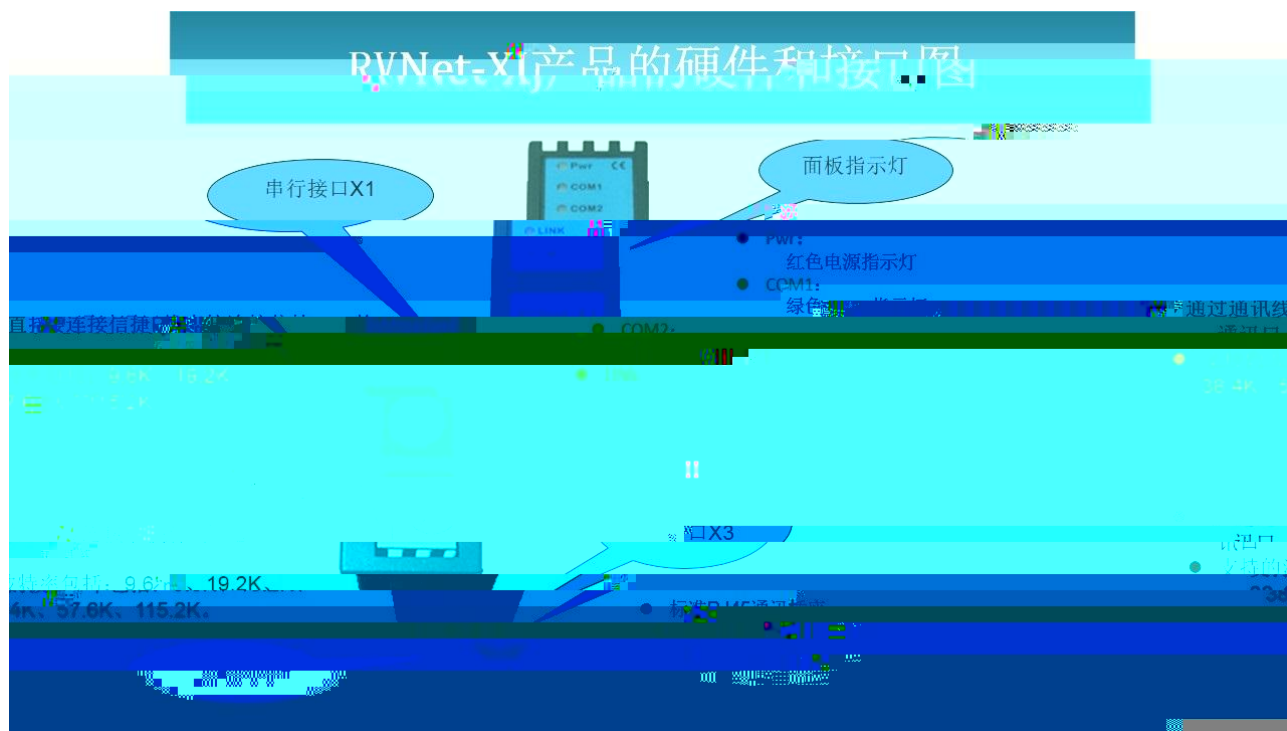
---

# CW

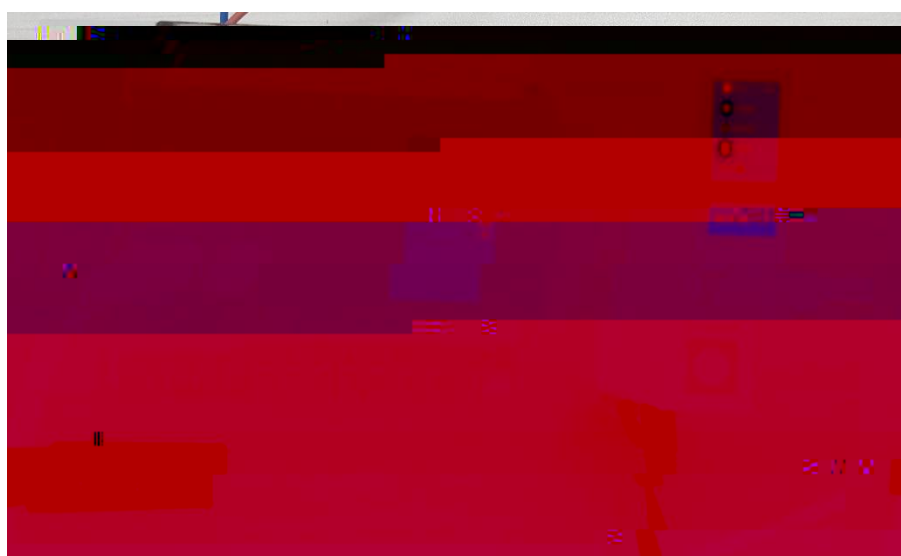
---



2.1



2.2



23

231 XI

---

---

---

---

232 X2

---

---

---

233 X3

---

---

---

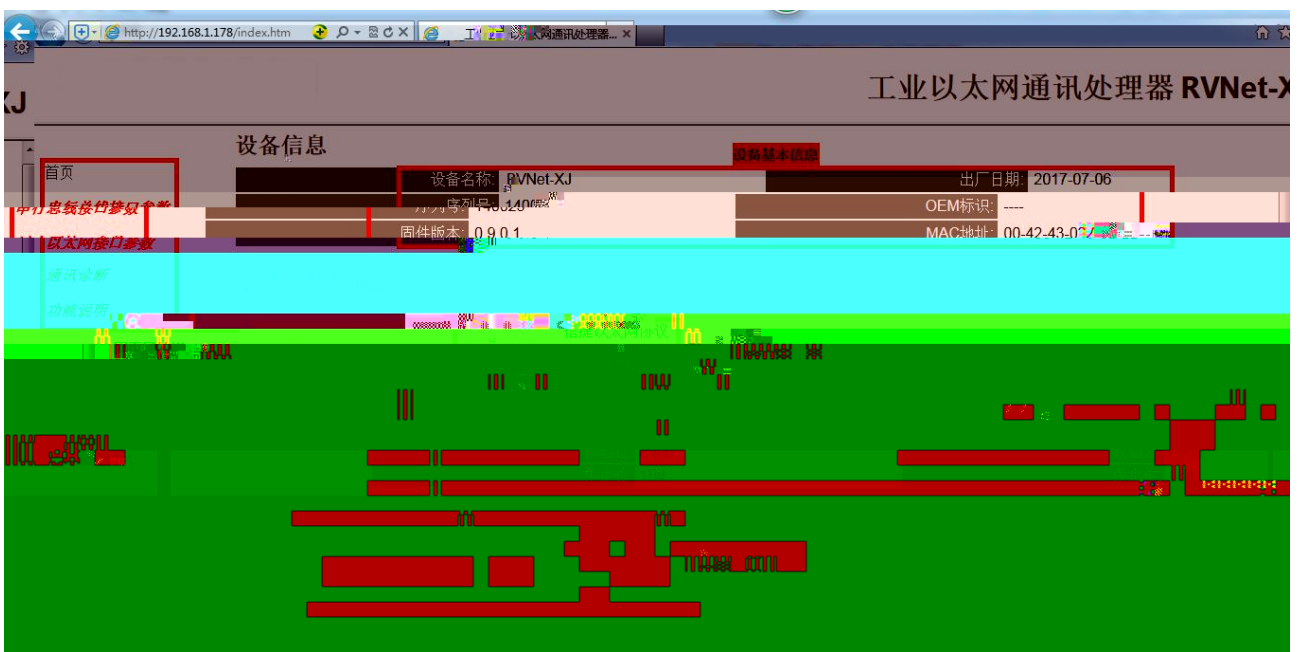
---

234 24VDC X4

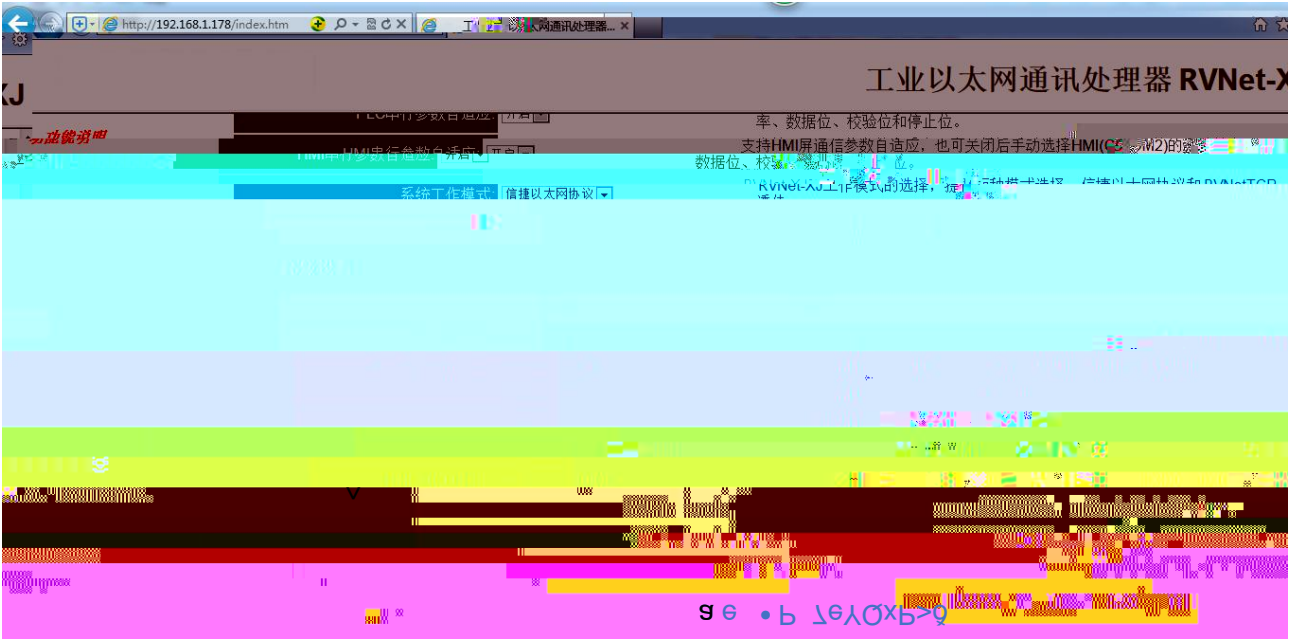





VNŠU @RS ( D & V



### 3.2.1



0 0 Ÿ 0 9

0

m

9 € P

Ã OE} R Y° ñ' ðÐ—ð

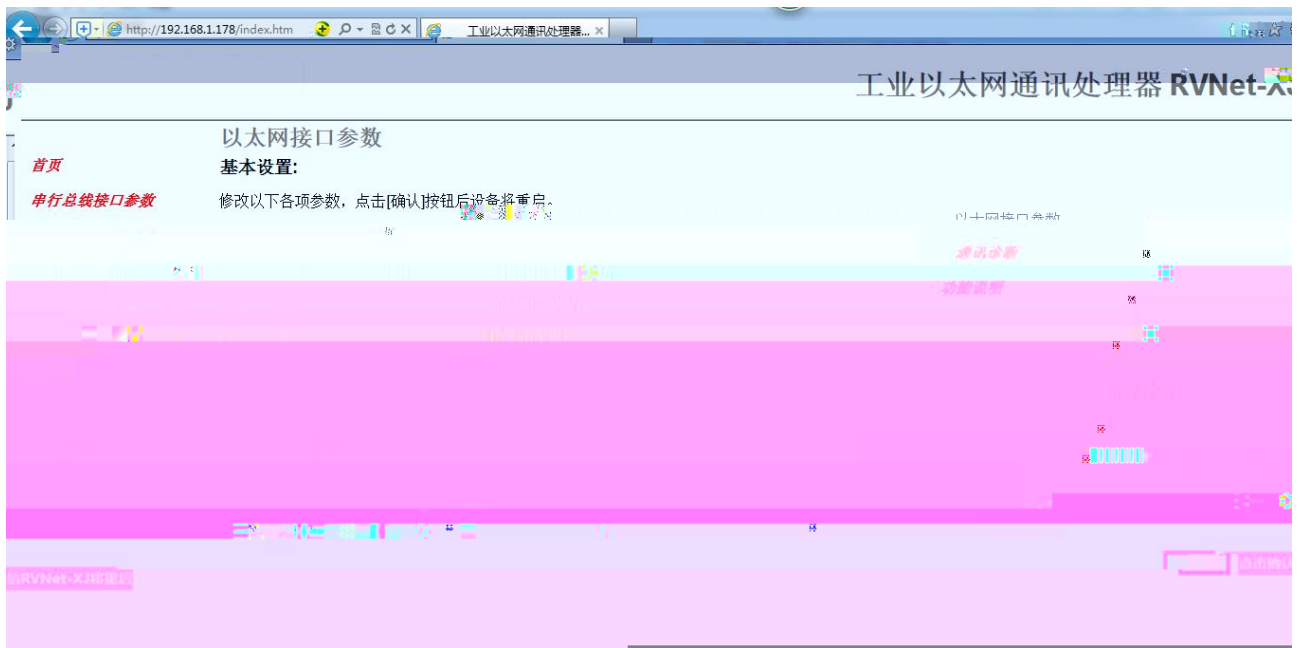
9 6

T p Ÿ P `„U3 6

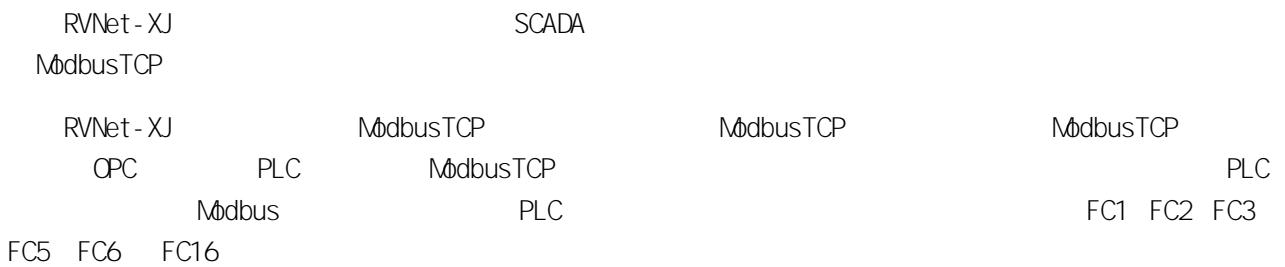
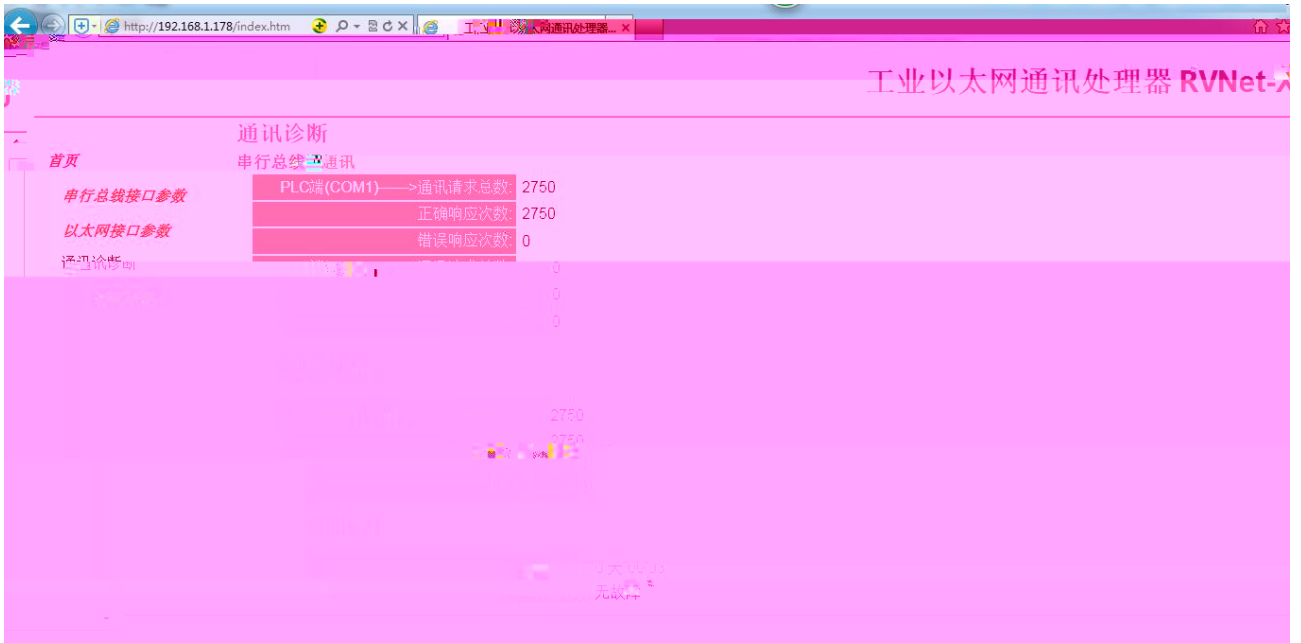
f

^

## 3.2.2



## 3.2.3





2 ModScan32

1. \ \ modscan2\_cr.rar

1. ModScan32

2. Connection/Connect Remote TCP/IP Server RVNet-XI IP Service  
502 [OK] 1

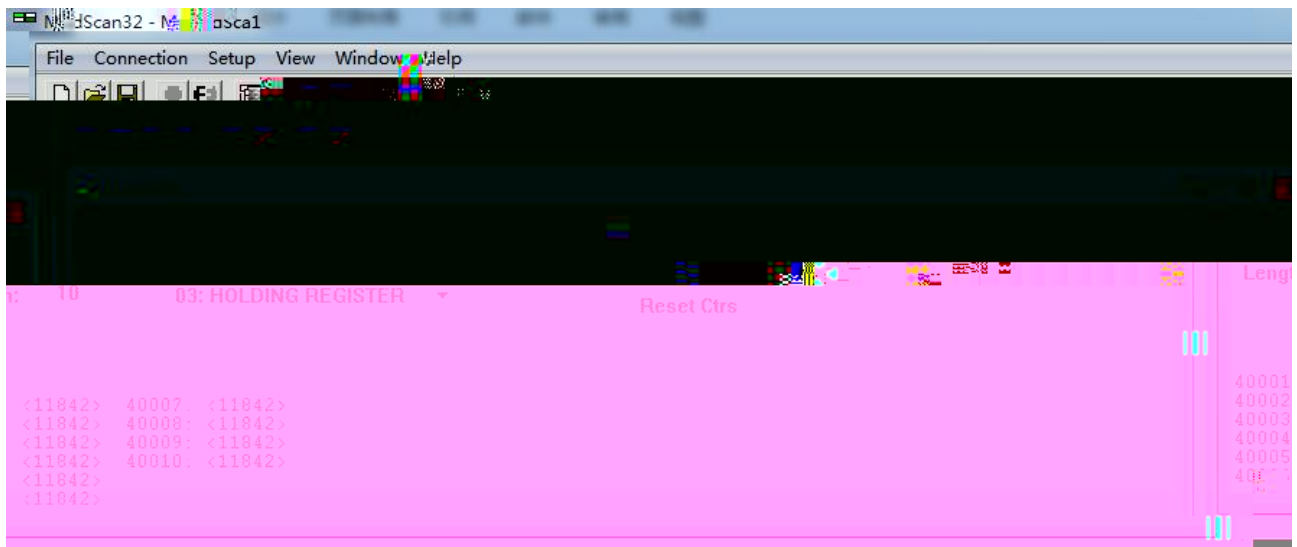


1

3. " ModSca1" Device ID PLC 1 03: HOLDING REGISTER  
Address = 0001 Length = 10

4. 40001 40010 16 PLC D0 D9

2



2

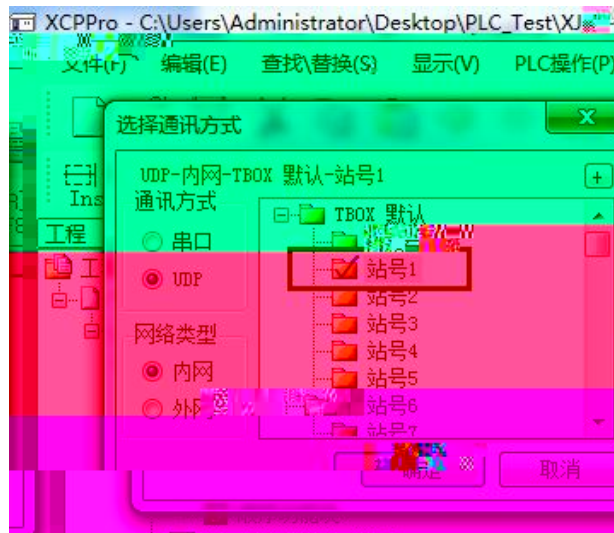
5.

## 4.1 RVNet-XJ

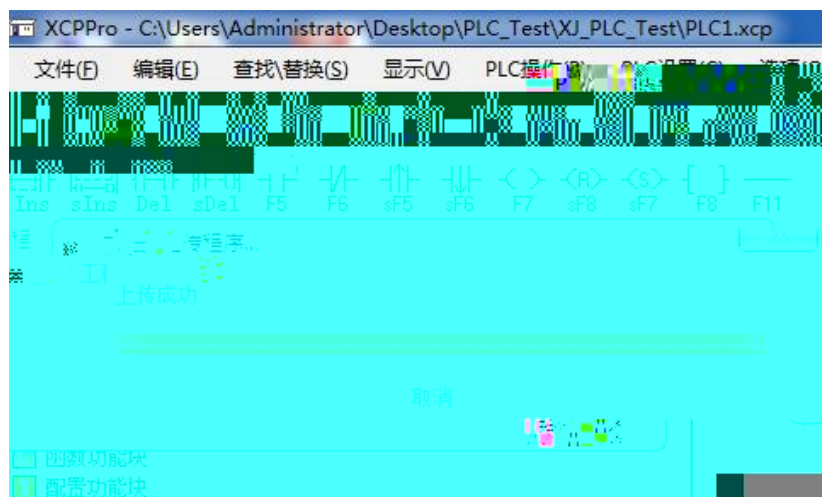
1. XCPPro " " " TCP\_IP " TBOX RVNet-XJ  
IP



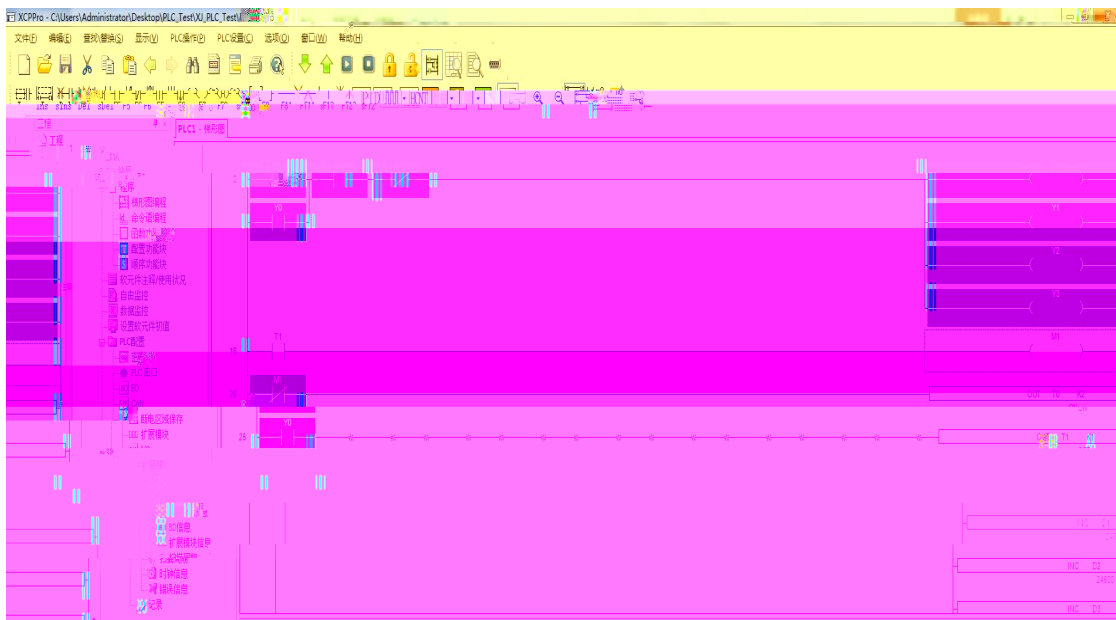
2. " " " " " UDP- - TBOX - 1"



3. PLC



4.



## 4.2 RVNet-XJ

- 1.
2. " COM" " " " ModbusTCP—TCP" " "



4. RVNet-XJ IP

/

192.168.1.178:502 1/50

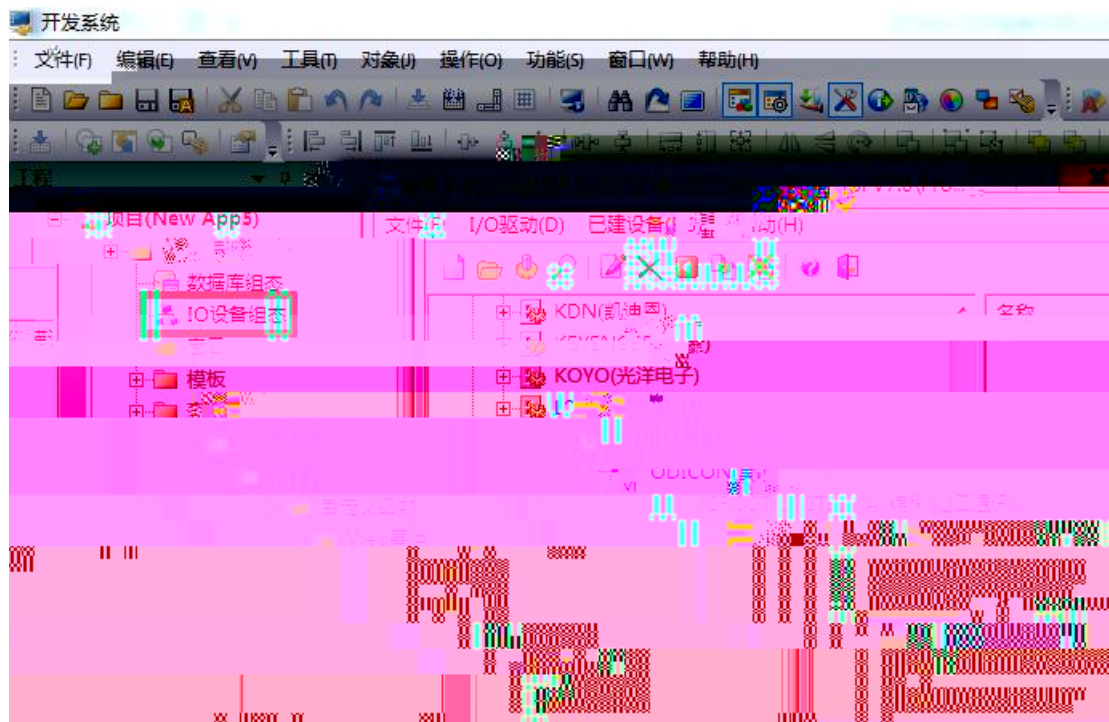


5.



## 4.3 RVNet-XJ

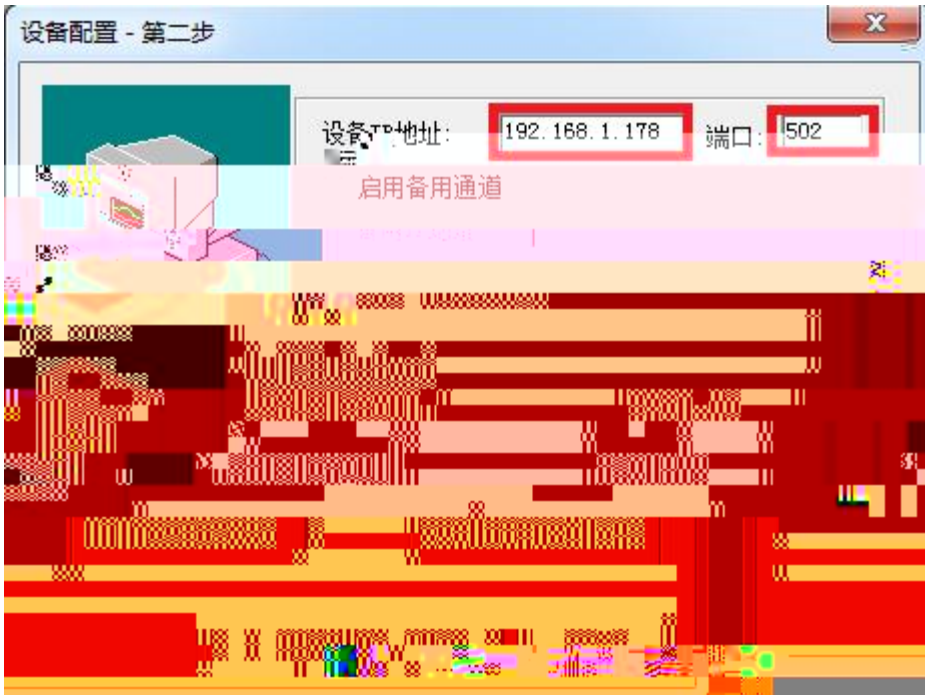
1. " IO " PLC " MODI CON " -MODBUS TCP "



2. " " DVP " " 1 " "



3. " IP " RVNet-XJ IP 192.168.1.178 " " 502



4.

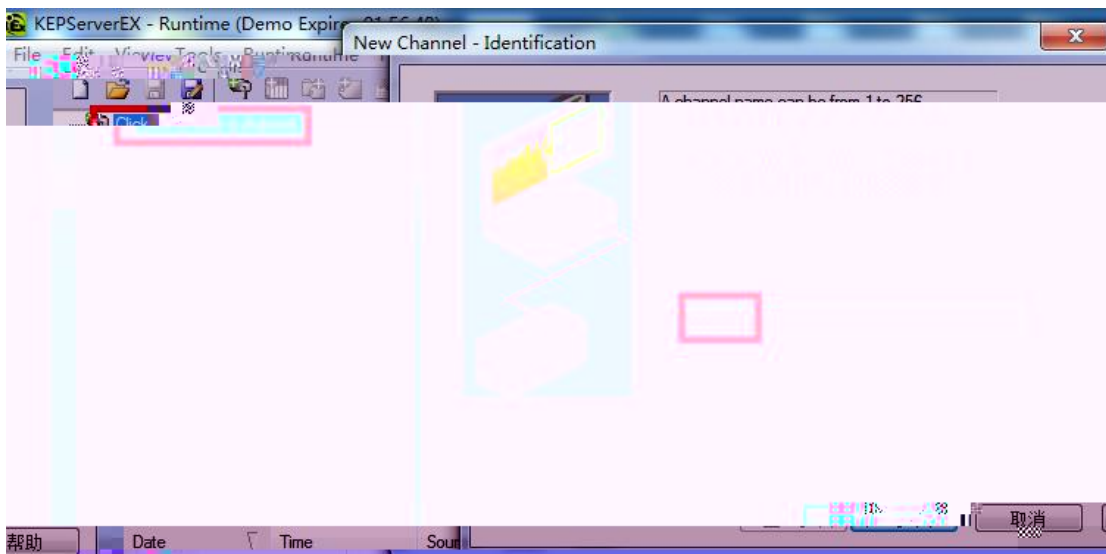


#### 4.4 RVNet-XJ

1. " " " " " " MB\_TCPI P " "



"



2. " Modbus TCP/IP Ethernet"

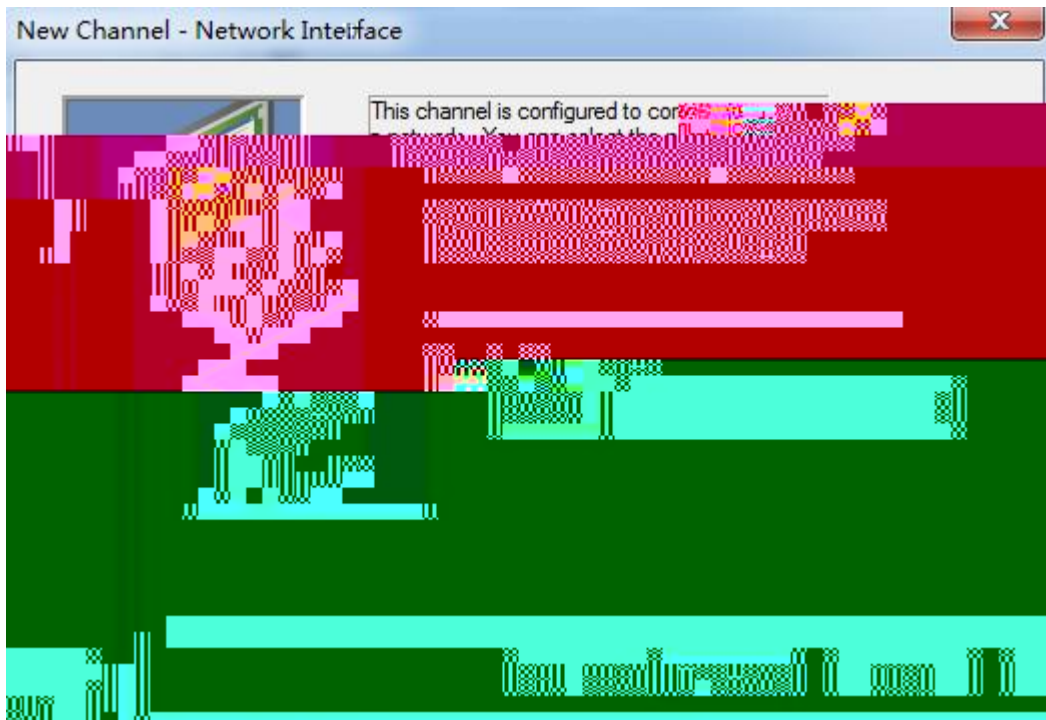
"

"

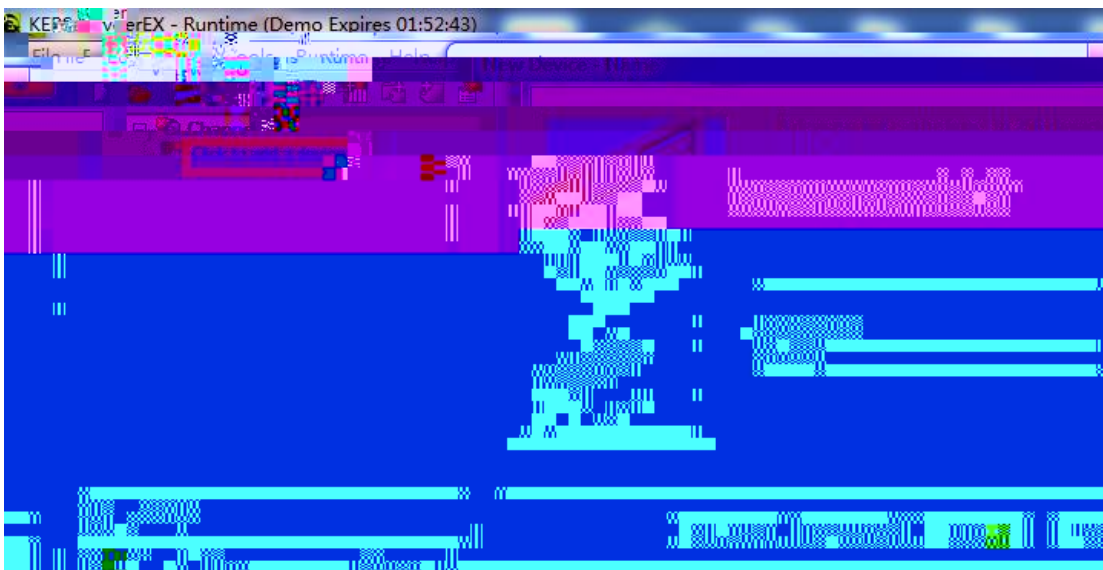


3.

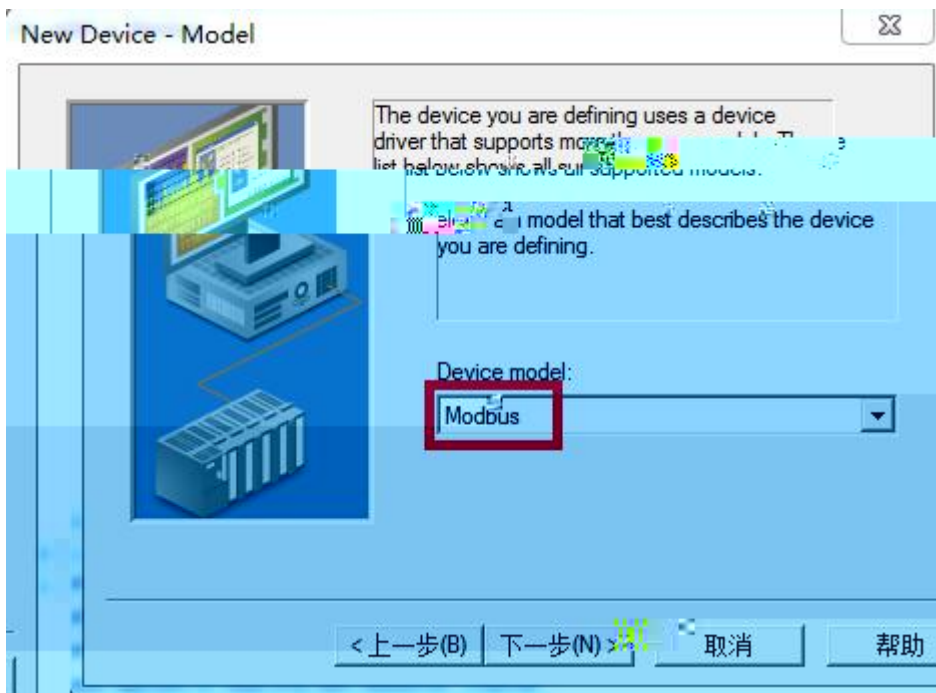
" Default"



4. " click to add a device" , " " "



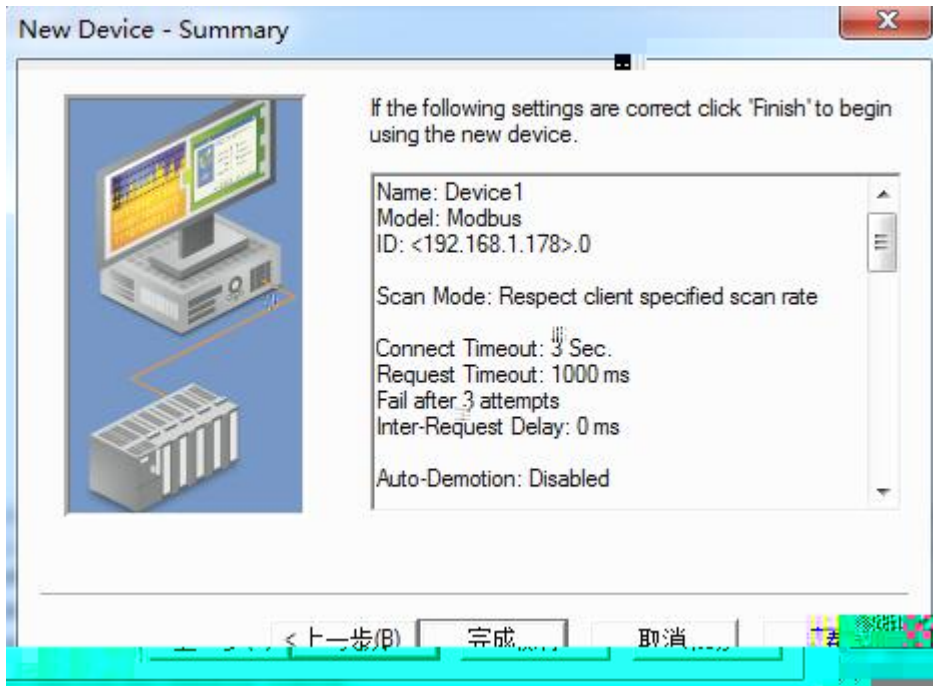
5. " Device Model " " Modbus "



6. " Device ID" IP .0 192.168.1.178.0

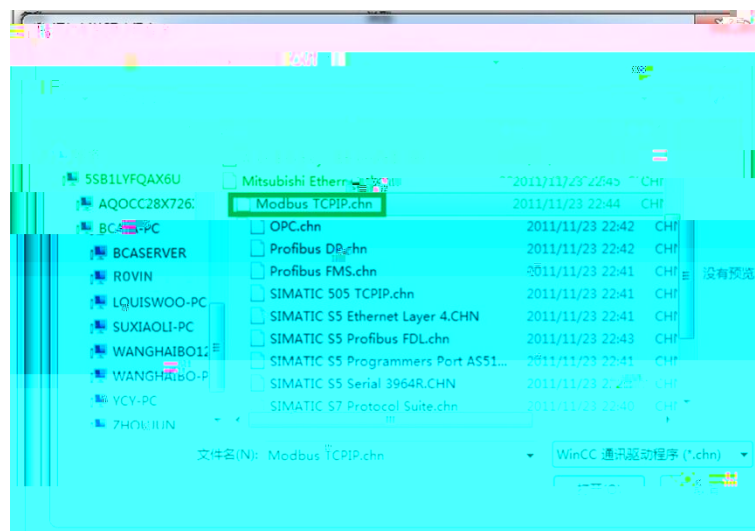


7.



## 4.6 RVNet-XI

## WINCC



" " " " " " "

